



DUAL-torque



MODEL DT1

MULTI-torque **SERIES**

Accessories for the Kolver EDU1AE

*Multiple torque settings with a single
screwdriver in your hand*

FEATURES

- **Two torque settings with one screwdriver and controller**
- **Switches from one torque to the other with a swipe of your finger**
- **Blue and white lights indicate which torque setting is activated**
- **Non-wearing optical sensor**
- **Plug and play with Kolver EDU1AE/C**
- **Mountable on top of EDU1AE/C or on a workbench close to the operator**

The Model *DUAL-torque*: DT1 is a member of the *MULTI-torque* family of accessories designed to interface with the Kolver EDU1AE controller and PLUTO series of DC electric screwdrivers. The EDU1AE controller offers complete control over RPM ramp - the speed of acceleration at the beginning of the joint run down; Run down speed - the speed at which the screwdriver runs at full speed; Break time - the speed of deceleration at the end of the joint; Final torque between 1—15 Nm; and an optional reverse time after the final torque is met.

The *MULTI-torque* family of accessories is designed to expand the functionality of the EDU1AE by enabling easy access to multiple torque settings with one EDU1AE controller.

The Model *DUAL-torque*: DT1 plugs and plays with the EDU1AE/C controller when connected to the control box, enabling the device to change between two torque settings with the swipe of a finger. The unit can sit on top of the controller or be placed in a convenient location on the work surface.



The unit incorporates a non-wearing optical sensor; when the light beam of the sensor is broken by the swipe of the operator's finger the unit switches from one torque setting to the other and changes the indicator light to blue or white.



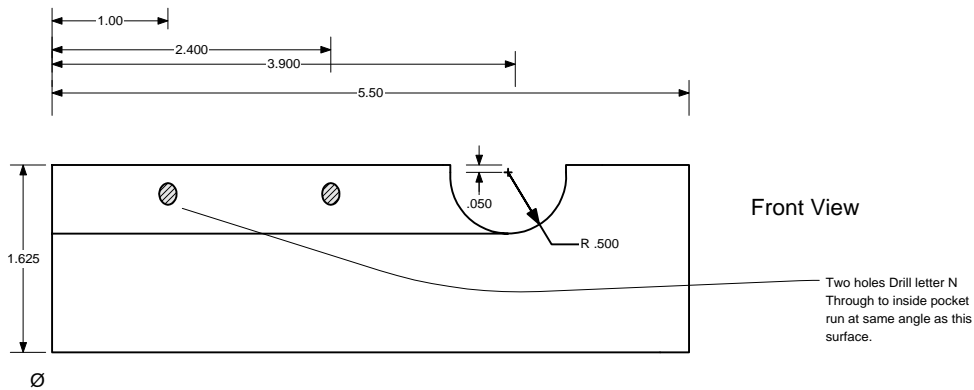
The torque settings on the EDU1AE/C must be calibrated with a torque testing device. The first torque setting is indicated on the controller's digital display and can be changed by the buttons on the front of the unit. The second torque setting is adjusted via a trim-pot on the back of the controller with a screwdriver. The torque setting is indicated as a percentage of total available torque on the digital display for both torque settings.

SPECIFICATIONS

Model *DUAL*-torque: DT1



- Weight: 2.5 lbs
- Power: None required - the unit is powered off the connection to the KolverEDU1AE/C controller
- Lights: Blue and white high power LED
- Switch: Non-wearing optical sensors
- Cable Length: 7.5 ft standard; optional lengths available upon request



SET-UP INSTRUCTIONS

Step One:

Plug the connector end of the cable supplied with the Model *DUAL*-torque: DT1 into the connector on the back of the Kolver model EDU1AE/C controller.



Step Two:

Adjust and calibrate the first torque setting on the front digital display as normally done.

Step Three:

Swipe your finger through the optical sensor channel of the DT1



Step Four:

Adjust the second torque setting by turning the trim-pot on the back of the controller. The digital torque value will change on the front display accordingly. Calibrate as required.

